



For Lease

\$2.75
PSF Modified Gross

Contact us:

Preston Thomas, SIOR
Senior VP | Principal
License #01378821
Office: +1 805 544 3900
preston.h.thomas@colliers.com

Ryan Evans
Associate
License #02245461
Office: +1 805 544 3900
Cell: +1 805 431 1529
ryan.evans@colliers.com

Colliers | San Luis Obispo
1301 Chorro Street
San Luis Obispo, CA 93401
P: +1 805 544 3900
www.colliers.com

1327 Archer Street, Ste 220 San Luis Obispo, CA

Newer Class A Office Space - 2,966 - 4,512 SF
Close to Downtown

Property Summary

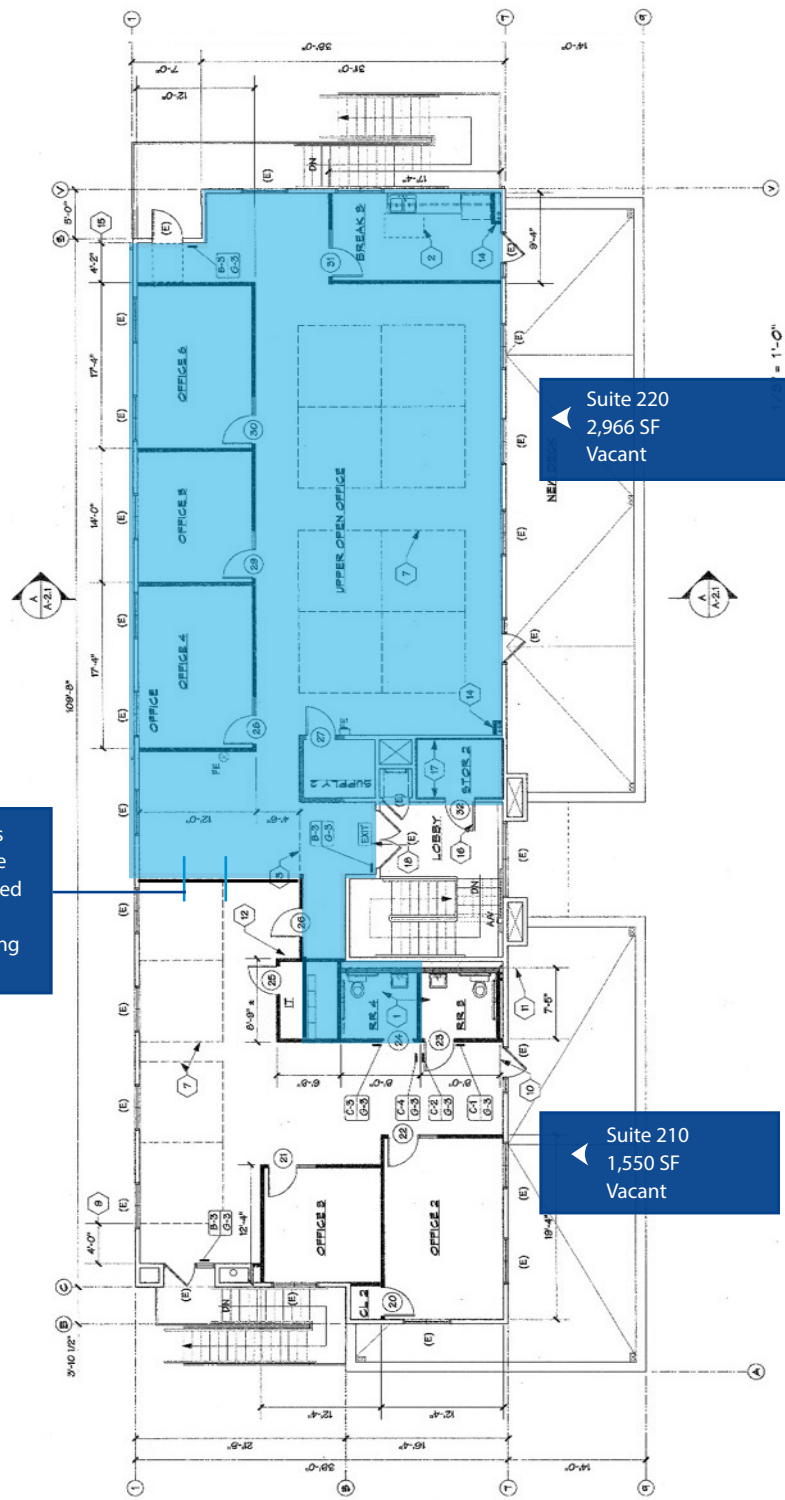
Hard to find large, modern office suite near Downtown. Large second floor suite layout includes open work area (can easily accommodate up to 12 people) with three offices and break area. On-site parking. System furniture in place. Exclusive balcony with great views. Ready to occupy!

Located in a newer Class A office building with close proximity to the Downtown core and easy freeway access.

Can be merged with next door suite for 4,512 sf (5 hard offices and 16 total works areas)

Size	2,966 - 4,512 ± SF
Rate	\$2.75 PSF Modified Gross
Layout	3 offices, open work area, kitchenette and restrooms
Zoning	C-S Commercial Service
Type	Office
Location	Off Pismo Street, near Downtown San Luis Obispo
Parking	On-Site - 1/300 SF

Floor Plan



Suite 220
 2,966 SF
 Vacant

Suites
 can be
 combined
 by
 removing
 wall

Suite 210
 1,550 SF
 Vacant

Contact

Preston Thomas, SIOR
 Senior VP | Principal
 License #01378821
 Office: +1 805 544 3900
 preston.h.thomas@colliers.com

Ryan Evans
 Associate
 License #02245461
 Office: +1 805 544 3900
 ryan.evans@colliers.com

Colliers | San Luis Obispo
 1301 Chorro Street
 San Luis Obispo, CA 93401
 P: +1 805 544 3900
 www.colliers.com

Photo Gallery

Colliers

Open Work Area



Office



Open Work Area



Office



Kitchenette



Deck



Photo Gallery

Colliers

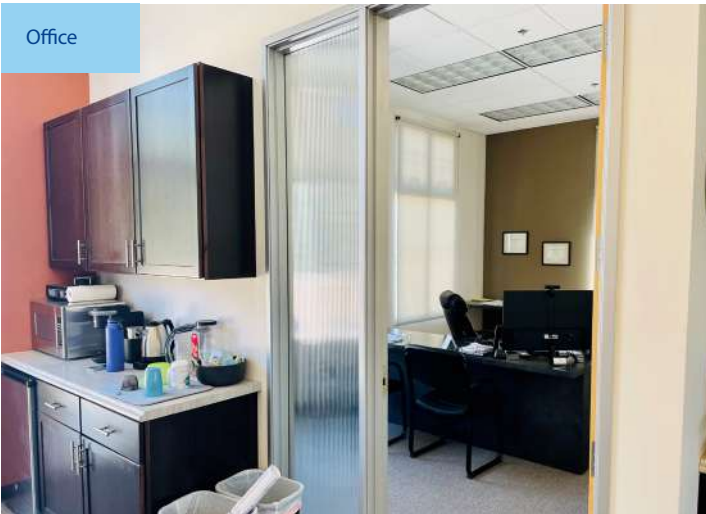
Office



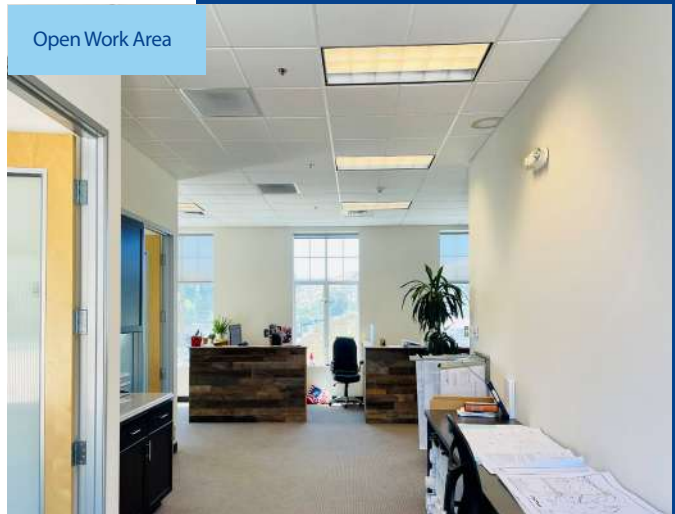
Open Work Area



Office



Open Work Area

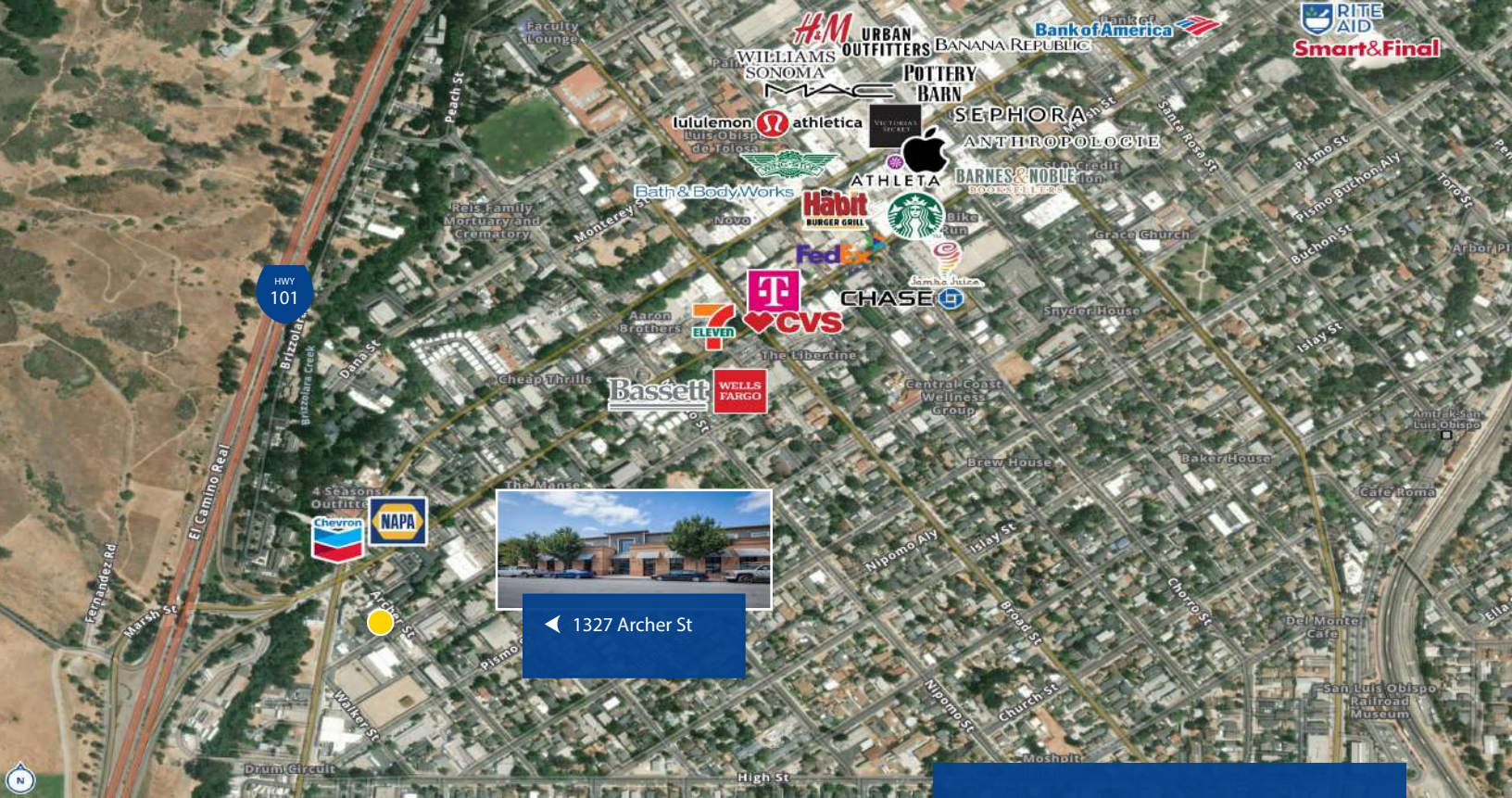


Open Work Area/Restroom



Corner Pismo/Archer Streets





◀ 1327 Archer St



Demographics by Drive Times (1/5/10 Minutes from Subject)

Distance >	1 Minute Drive Time		5 Minute Drive Time		10 Minute Drive Time	
	Current (2021)	Forcast (2026)	Current (2021)	Forcast (2026)	Current (2021)	Forcast (2026)
Population	11,200	11,795	61,552	63,146	83,507	85,569
Households	5,292	5,558	21,391	22,055	31,085	31,952
Families	1,794	1,895	8,857	9,134	14,748	15,134
Avg. HH Size	2.08	2.08	2.33	2.33	2.30	2.31
Owner Occupied	2,062	2,170	10,223	10,535	17,045	17,535
Renter Occupied	3,230	3,388	11,168	11,520	14,040	14,417
Median Age	32.3	33.4	28.2	29.1	33.7	35.3
Median HH Income	\$59,328	\$69,321	\$60,347	\$69,420	\$68,637	\$78,592
Avg HH Income	\$88,475	\$100,424	\$92,424	\$103,988	\$100,139	\$113,195

Contact:
 Preston Thomas, SIOR
 Senior VP | Principal
 License #01378821
 Office: +1 805 544 3900
 preston.h.thomas@colliers.com

Ryan Evans
 Associate
 License #02245461
 Office: +1 805 544 3900
 Cell: +1 805 431 1529
 ryan.evans@colliers.com

Colliers | San Luis Obispo
 1301 Chorro Street
 San Luis Obispo, CA 93401
 P: +1 805 544 3900
 www.colliers.com

¹ Footnote: Data sourced from U.S. Census Bureau, Census Summary File 1. Current and 5 year projections as recorded by ESRI forecast data.