



Accelerating success.



For Lease

\$3.25

PSF MG

(+ Utilities + 5% Management Fee)

Contact us:

Preston Thomas, SIOR

Senior VP | Principal

BRE #01378821

Office: +1 805 544 3900



Colliers | San Luis Obispo

1301 Chorro Street

San Luis Obispo, CA 93401

P: +1 805 544 3900

www.colliers.com

1026 Chorro Street Downtown San Luis Obispo

Class A Professional Office Suite ± 1,861 SF

Property Summary

Arguably the nicest office space in town! Professional office located in the heart of Downtown San Luis Obispo. Located caddy corner from the Mission, this office building has recently under gone a full renovation.

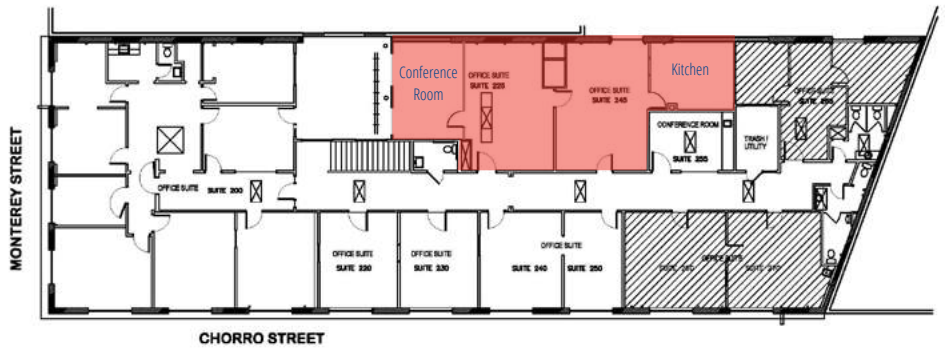
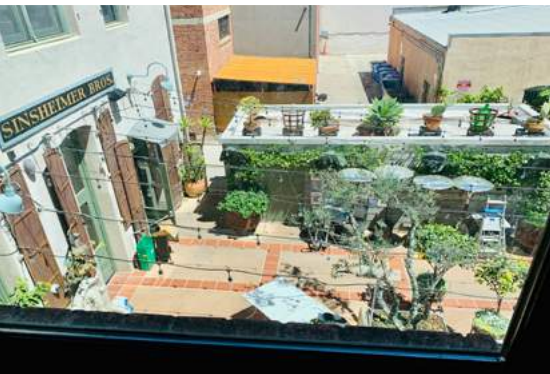
Very high-end fixtures with no expense spared. Amenities include 11' ceilings with the original brick walls and hardwood floors. A sophisticated common area, conference room, secure entry with intercom access.

Suite 225/245	± 1,861 SF
Suite 260/270	± 1,042 SF LEASED
Exposure	± AADT on Chorro Street
Rate	\$3.25 PSF MG (+ Utilities + 5% Management Fee)
Property Type	O (Office)
Minimum Lease	Two Years
Location	Downtown San Luis Obispo

Accelerating success.

Floorplan 225/245

Colliers



* Floor plan not to scale and approximate.

Suite 225/245	± 1,861 SF
Exposure	± 14,434 AADT on Higuera Street
Rate	\$3.25 PSF MG (+ Utilities + 5% Management Fee)
Property Type	O (Office)
Build-Out	Includes two large work areas, office/conference room and kitchenette – overlooks Giuseppe's back patio. Includes system furniture for 10-12 employees.



Contact

Preston Thomas, SIOR

Senior VP | Principal

BRE #01378821

Office: +1 805 544 3900

preston.h.thomas@colliers.com



Colliers | San Luis Obispo

1301 Chorro Street

San Luis Obispo, CA 93401

P: +1 805 544 3900

www.colliers.com

Property Gallery

Colliers

Common Area
Conference Room



Hallway



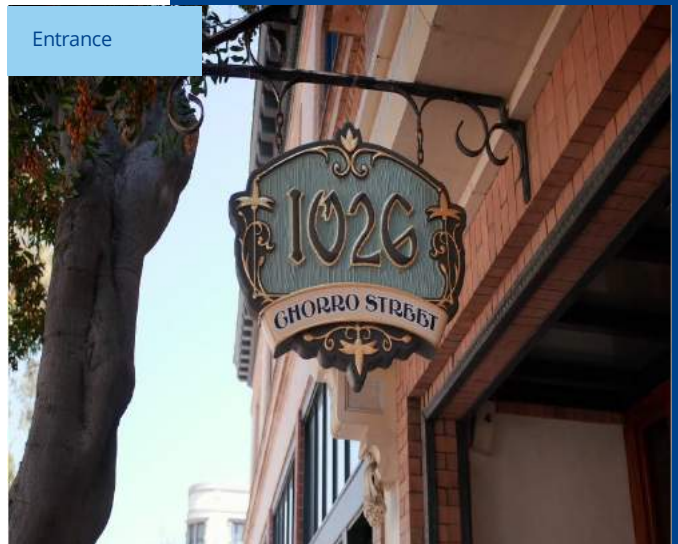
Location

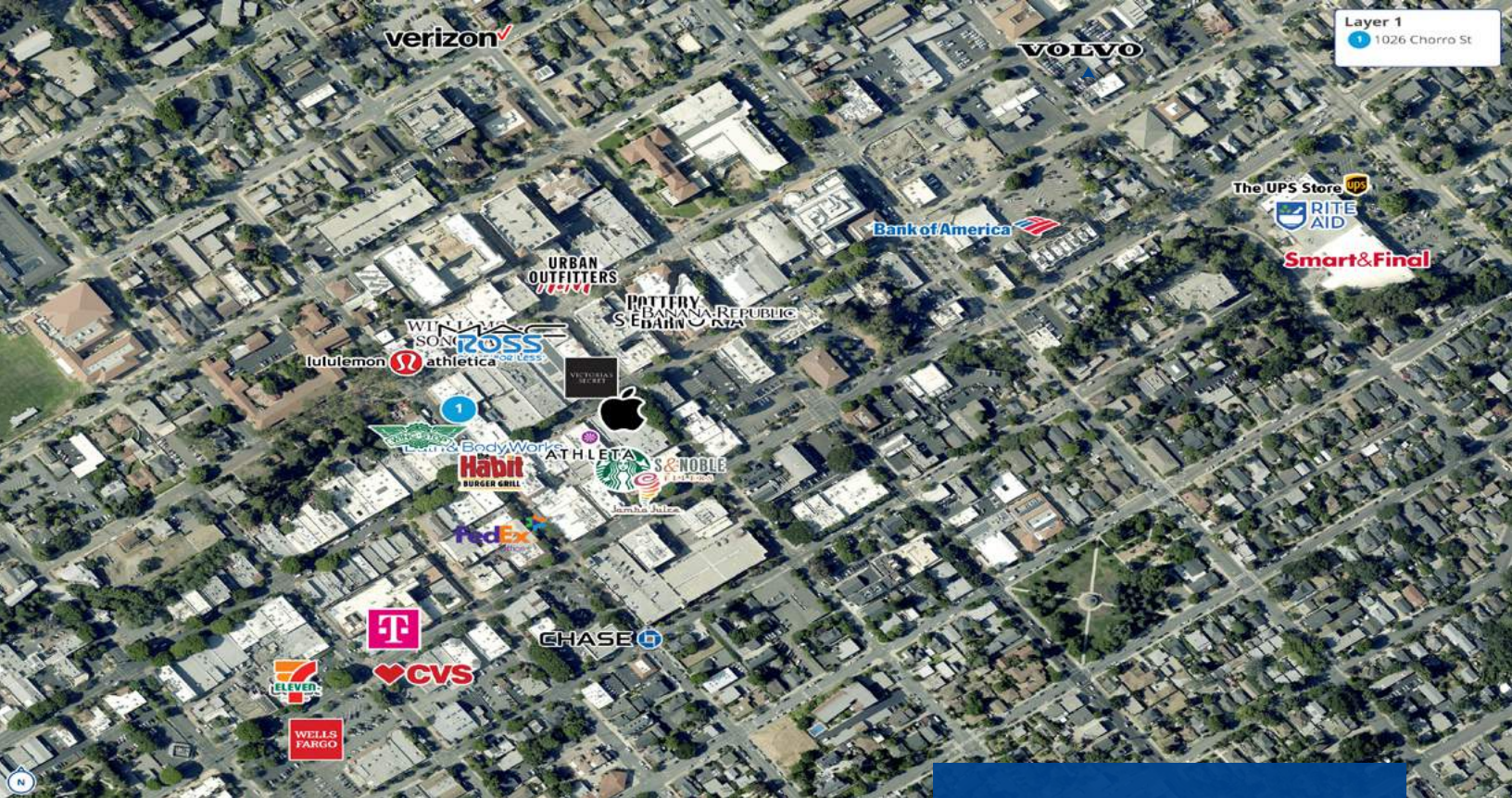


San Luis Obispo Mission



Entrance





Layer 1
1 1026 Chorro St



Demographics by Drive Times (1/5/10 Minutes from Subject)

Distance >	1 Minute Drive Time		5 Minute Drive Time		10 Minute Drive Time	
	Current (2021)	Forecast (2026)	Current (2021)	Forecast (2026)	Current (2021)	Forecast (2026)
Population	15,465	15,909	60,918	62,510	81,355	83,366
Households	7,105	7,299	21,116	21,778	30,053	30,895
Families	1,999	2,055	8,649	8,925	14,122	14,493
Avg. HH Size	2.14	2.14	2.33	2.33	2.31	2.31
Owner Occupied	2,116	2,158	9,984	10,294	16,196	16,665
Renter Occupied	4,989	5,142	11,132	11,484	13,857	14,230
Median Age	26.7	27.2	28.1	28.9	33.2	34.8
Median HH Income	\$47,634	\$54,204	\$59,676	\$68,494	\$68,051	\$78,19
Avg HH Income	\$75,430	\$85,337	\$91,268	\$102,712	\$99,966	\$112,997

¹ Footnote: Data sourced from U.S. Census Bureau, Census Summary File 1. Current and 5 year projections as recorded by ESRI forecast data.

Contact:

Preston Thomas, SIOR
Senior VP | Principal
BRE #01378821
Office: +1 805 544 3900



Colliers | San Luis Obispo
1301 Chorro Street
San Luis Obispo, CA 93401
P: +1 805 544 3900
www.colliers.com