



Accelerating success.



For Lease

\$1.85
PSF Modified Gross

Contact us:

Preston Thomas, SIOR
Senior VP | Principal
License #01378821
Office: +1 805 544 3900
preston.h.thomas@colliers.com

Ryan Evans
Associate
License #02245461
Office: +1 805 544 3900
ryan.evans@colliers.com

Colliers | San Luis Obispo
1301 Chorro Street
San Luis Obispo, CA 93401
P: +1 805 544 3900
www.colliers.com

102 Cross Street, Ste 210 San Luis Obispo, CA

3,934 SF of Office Space in South San Luis Obispo
Short Distance to Highway 101

Property Summary

3,934 SF of modern office space located in a convenient location next door to the Trader Joe's Center in south San Luis Obispo. Space includes three hard offices, conference room, bull pen area and kitchenette/breakroom. Very good natural lighting and views. Includes on-site parking. Easy freeway access.

Size	±3,934 (includes pro rata share of common area)
Rate	\$1.85 PSF Modified Gross
Property Type	Office
Zoning	C-S Commercial Service (No gym or auto uses allowed)
Location	South San Luis Obispo, off S. Higuera Street
Parking	10 Spaces

Floor Plan

Colliers

▼ Suite 210
3,934± SF



* Floor Plan is Approximate

Size	±3,934 (includes pro rata share of common area)
Rate	\$1.85 PSF Modified Gross
Property Type	Office
Zoning	C-S Commercial Service (No gym or auto uses allowed)
Location	South San Luis Obispo, off S. Higuera Street
Parking	10 Spaces

Contact

Preston Thomas, SIOR
Senior VP | Principal
License #01378821
Office: +1 805 544 3900
preston.h.thomas@colliers.com

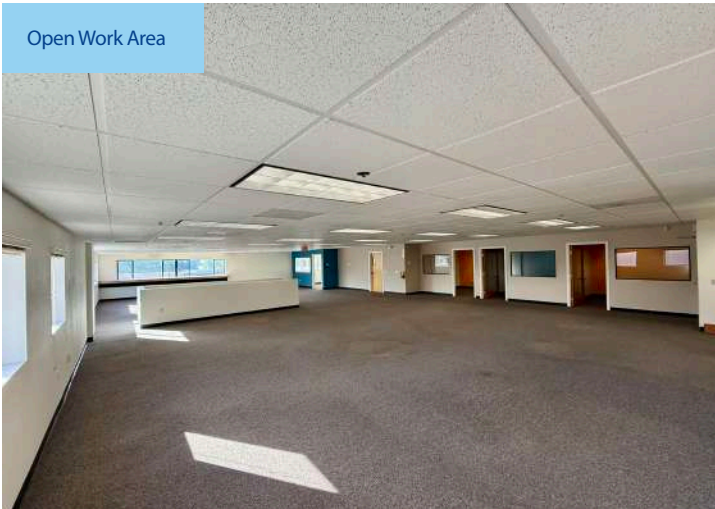
Ryan Evans
Associate
License #02245461
Office: +1 805 544 3900
ryan.evans@colliers.com



Property Gallery

Colliers

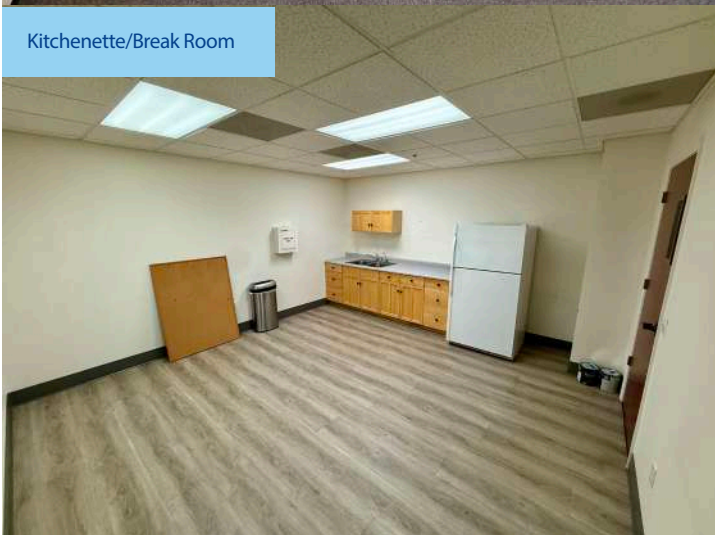
Open Work Area



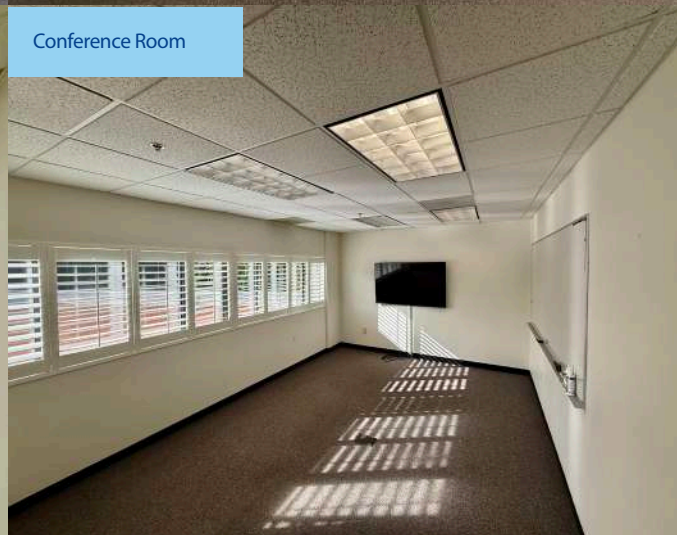
Offices



Kitchenette/Break Room



Conference Room



Entryway



Open Work Area





Demographics by Drive Times (1/3/5 Minutes from Subject)

Distance >	1 Minute Drive Time		3 Minute Drive Time		5 Minute Drive Time	
	Current (2025)	Forecast (2030)	Current (2025)	Forecast (2030)	Current (2025)	Forecast (2030)
Population	4,722	4,969	37,094	38,953	62,653	64,527
Households	2,004	2,074	16,277	17,297	23,447	24,539
Families	1,069	1,110	8,198	8,766	10,936	11,530
Avg. HH Size	2.33	2.37	2.23	2.20	2.27	2.24
Owner Occupied	1,426	1,518	8,358	9,146	11,020	11,910
Renter Occupied	578	555	7,919	8,151	12,427	12,629
Median Age	41.8	43.6	38.5	40.0	29.4	31.4
Median HH Income	\$94,767	\$105,514	\$97,708	\$108,962	\$83,127	\$97,733
Avg HH Income	\$130,636	\$147,496	\$135,100	\$150,475	\$125,874	\$139,625

¹ Footnote: Data sourced from U.S. Census Bureau, Census Summary File 1. Current and 5 year projections as recorded by ESRI forecast data.

Contact:

Preston Thomas, SIOR

Senior VP | Principal

License #01378821

Office: +1 805 544 3900

preston.h.thomas@colliers.com

Ryan Evans

Associate

License #2245461

Office: +1 805 544 3900

ryan.evans@colliers.com

Colliers | San Luis Obispo

1301 Chorro Street

San Luis Obispo, CA 93401

P: +1 805 544 3900

www.colliers.com